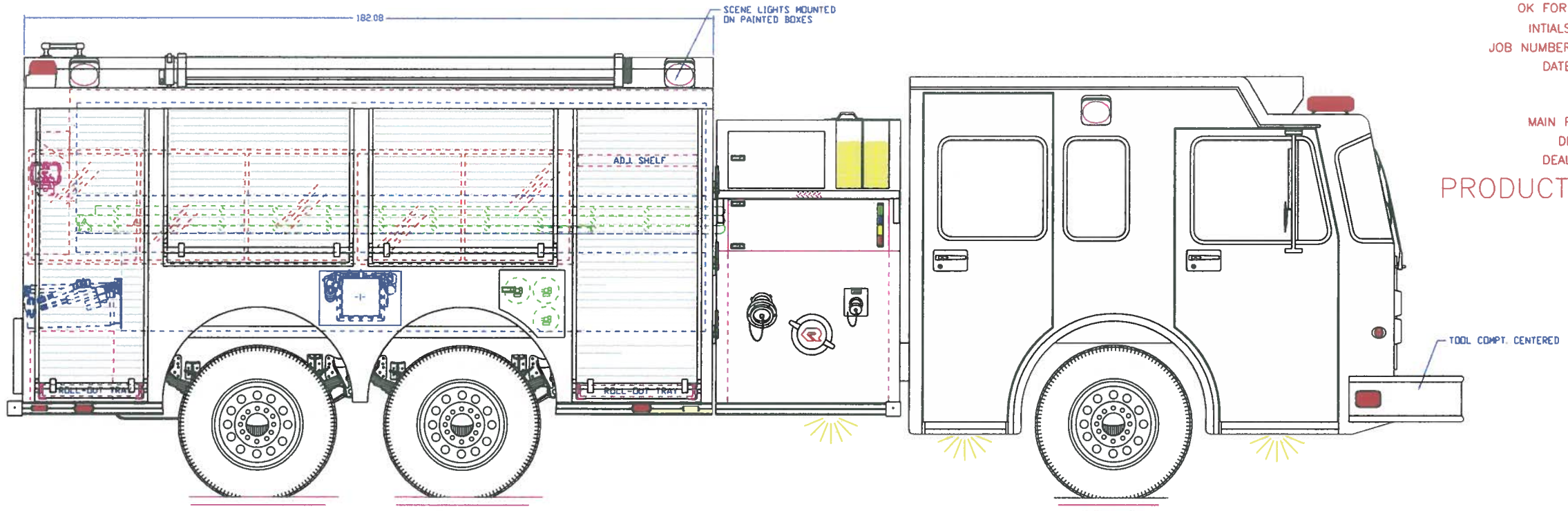
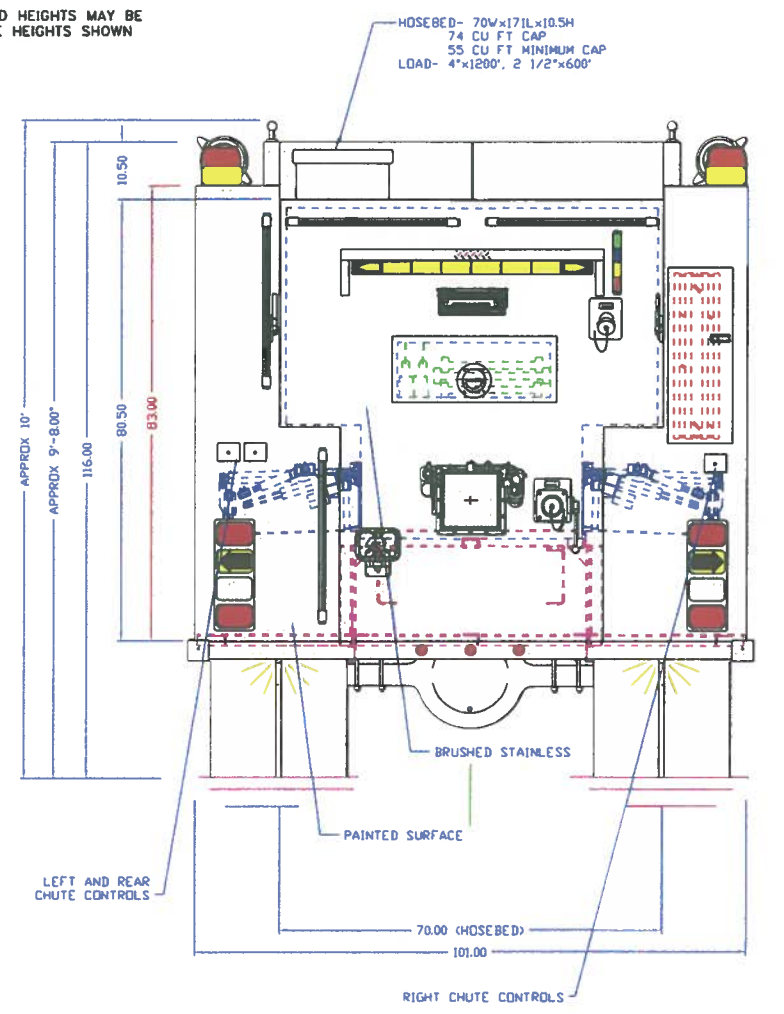
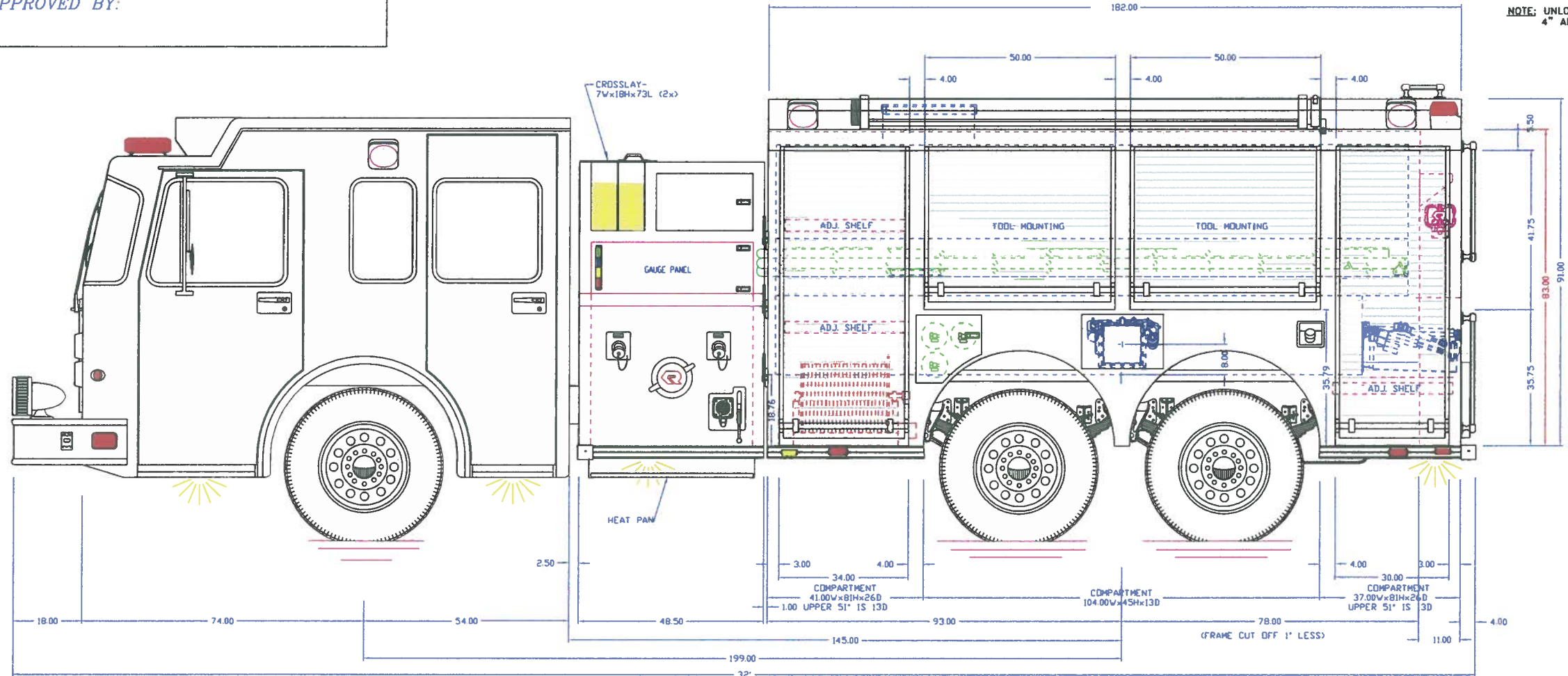


APPROVED BY:



OK FOR PRODUCTION
 INITIALS: JW
 JOB NUMBER: 2788
 DATE: 12-15-08

MAIN FILE: _____
 DEPT: _____
 DEALER: _____

PRODUCTION APPROVED

NOTE: TANK CAP- 2000 GAL POLYPROPYLENE
 PUMP CAP- 1500 GPM
 DIMENSIONS SHOWN ARE APPROXIMATE AND ARE SUBJECT TO MINOR DEVIATIONS DURING CONSTRUCTION
 NOT ALL ITEMS IN SPECS ARE SHOWN ON THIS PRINT
 COMPARTMENT INTERIORS SPRAY LINED
 SIDE PUMP PANELS BLACK THERMOPLASTIC
 NFPA UPPER LIGHT PACKAGE- WHELEN
 NFPA LOWER LIGHT PACKAGE- WHELEN
 ROLL UP DOOR EFFECTIVE OPENING- 3" NARROWER AND 5" SHORTER THAN ACTUAL OPENING IN BODY

NOTE: 3/16" ALUMINUM CONSTRUCTION

NONE	MAXIMUM HEIGHT	DATE: 05-28-08	BY: VLM	REVISED: 08-12-08	BY: BVZ	REVISED: 10/17/08
32'2"	MAXIMUM LENGTH	DATE: 05/08	BY: VLM	REVISED: 12/13/08	DATE: 02-23-09	
101"	BODY WIDTH					
CENTRAL						DATE: 03-04-09



FENTON FIRE DEPT., MI